



Dim To Dark



Flicker Free



Per Inch



Static White, Dynamic White, RGB+W



Human Centric Tunable Fixtures



Natorium Rated Systems



Custom Transitions



Warm Dimming

Features

OUTPUT

- 1.5" Standard Output: 4w/ft/ 400lm/ft High Output: 6w/ft 600lm/ft
- 2" Standard Output 4w/ft 400lm/ft High Output: 8w/ft 800 lm/ft
- 3.5" Standard Output: 5w/ft 500lm/ft High Output: 10w/ft 1000lm/ft
- 4" Standard Output 5w/ft 500lm/ft High Output: 10w/ft 1000lm/ft

OPTICS

- Extruded snap in opal lens
- Slump Lens (available for 1.5" fixtures only)

OPTIONS

- 90 Minute Emergency battery backup with remote test switch.
- Wet Location
- IP Optional
- Nlight enabled sensors

REMOTE DRIVER SYSTEM

- **Standard 0-10V:** 120-277VAC, 0-10V Dims to Dark (1%), Class II/B, THD < 10%, PF > 0.95. Programmable in 1mA increments up to 96W.
- **Analog Tunable White:** 120-277VAC, Dual 0-10V channels for both intensity and color (CCT) tuning. Class II/B, THD < 10%, PF > 0.95. Programmable in 1mA increments up to 50W.
- **DALI:** 120-277VAC, Dims to Dark (1%), Class II/B, THD < 10%, PF > 0.95. Programmable in 1mA increments up to 96W.
- **DMX:** 120-277VAC, Dims over DMX, Class II/B, THD < 10%, PF > 0.95. Programmable in 25mA increments up to 96W. Up to 4 Channel DMX.

- **Athena Wireless:** Lutron proprietary wireless control solution for DALI-2 Type 8 drivers allowing mesh wireless control for seamless installation. Available in tunable white and static white solutions only. One Athena node per LED driver is required. Athena comes pre-wired in our remote driver box. Consult factory for more info.

REFLECTOR

- 97% reflective white finish, die-formed aluminum

HOUSING

Constant Current Wafer Board technology allows runs to be built in 1" increments with no dark spots, no shadows, and edge to edge lens saturation.

FINISH

Powder coat white standard and other RAL color options available:

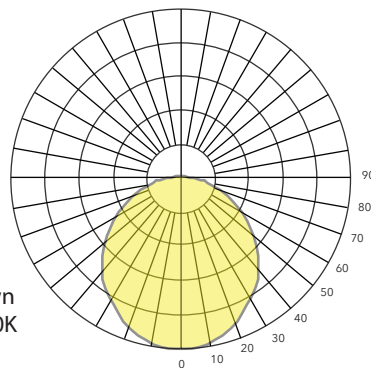
- Matte White,
- Gloss White,
- Black Steel,
- Silver
- Anodized Aluminum

CERTIFICATIONS

UL Listed/cLU Listed, IBEW (local 3) Union-Made in the USA

Photometrics

Power: 40W
Efficacy: 104Lm/W



*Photometric data shown for 4' high output @4000K with SD Lens

APOGEE LIGHTING

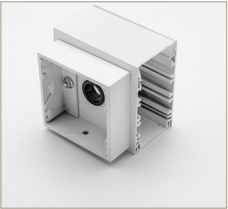


ORDERING INFORMATION FOR ORTHOGON

SERIES	WIDTH	COLOR	OUTPUT	LENS	LENGTH	MOUNTING/ DIRECTION	DIMMING & CONTROL	FINISH	OPTIONS
ORT - Orthogon	1 - 1.5"	27 - 2700K	SO - Standard Output	SD - Standard	2 - 23 3/8"	SRF - surface/direct	STD - standard 0-10V	WH - white	EM - Emergency
	2 - 2"	30 - 3000K	HO - High Output	SL* - Slump Lens	3 - 35 1/8"	PEN - pendant/direct	DA - DALI	CS - RAL paint match	WL - Wet Location
	3 - 3.5"	35 - 3500K		*(Slump Lens is available for 1.5" fixtures only)	4 - 47 1/4"	PEI - pendant/indirect	ADW - Analog Dynamic White (Dual 0-10V)	MW - Matte White,	IP-IP65
	4 - 4"	40 - 4000K			6 - 69 7/8"	WD - wall/direct	DMX DW - DMX Dynamic White	GW - Gloss White,	WCC - Constant current Wafer Boards (for 1" run increments)
		DW - Dynamic White			8 - 93 1/8"	WI - wall/indirect	DMX RGBW - DMX RGBW	BS - Black Steel,	NE - Nlight Enabled
		RGBW - RGBW			RUN - Specify	RG - recessed gypsum	347-347 Volt Driver	S - Silver	
						SRG - semi recessed gypsum	AW-Lutron Athena Wireless	AA - Anodized Aluminum	
						SRGRD - semi recessed grid			
						TEG - 9/16" Tegular			

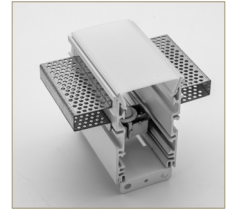
Sample Number: ORT-4-35-HO-SD-8-SRF-DA-GW-EM

Technical Drawings

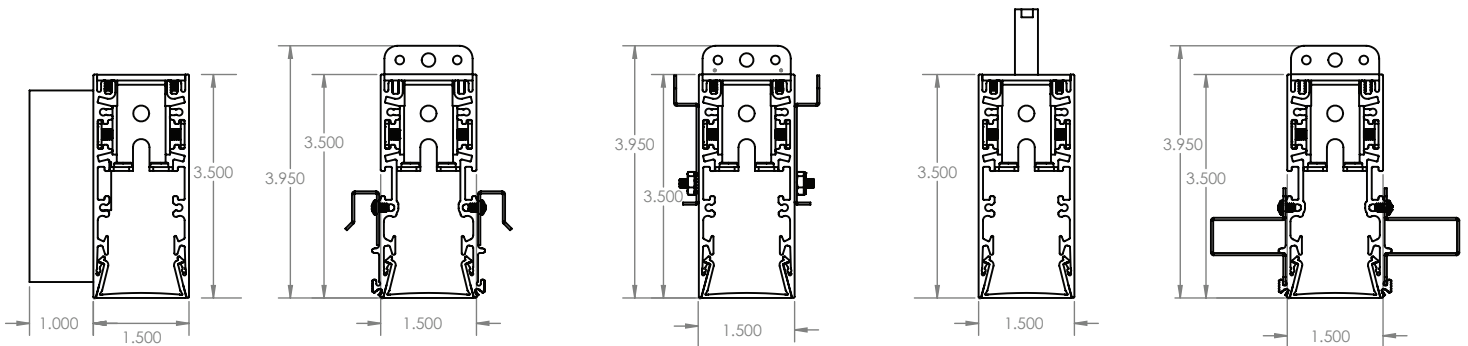
WALL

T-GRID

RECESSED/SEMI-RECESSED

PENDANT

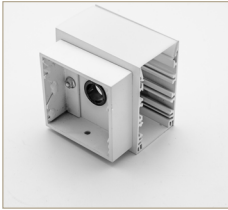
RECESSED GYPSUM


1.5" WIDE

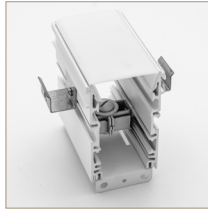


Technical Drawings

WALL



T-GRID



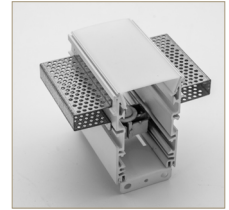
RECESSED/SEMI-RECESSED



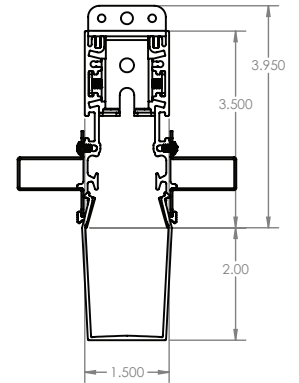
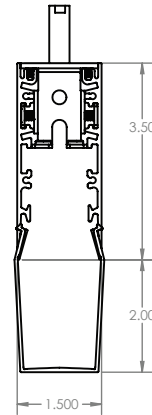
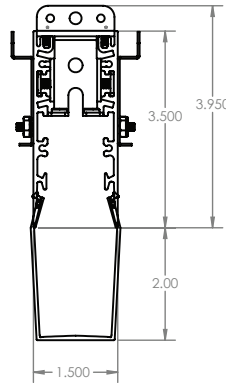
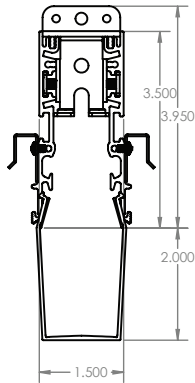
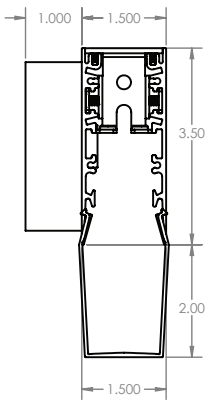
PENDANT



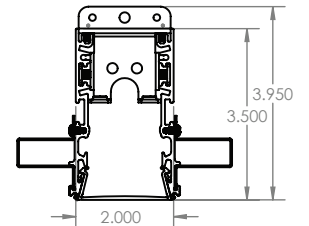
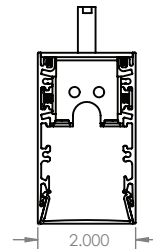
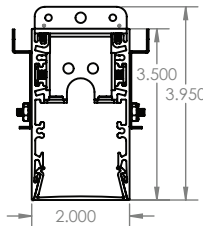
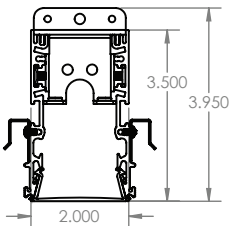
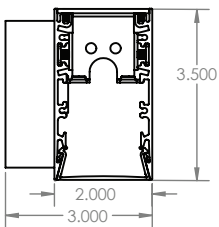
RECESSED GYPSUM



1.5" WIDE WITH SLUMP LENS



2" WIDE

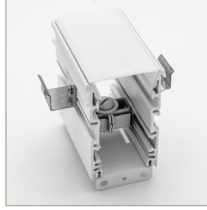


Technical Drawings

WALL



T-GRID



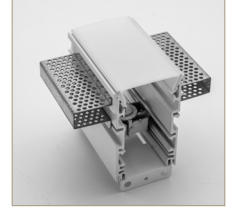
RECESSED/SEMI-RECESSED



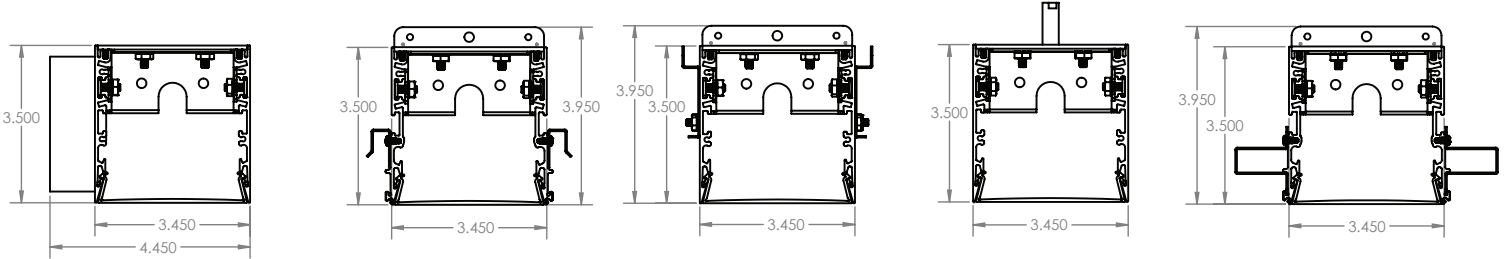
PENDANT



RECESSED GYPSUM



3.5" WIDE



4" WIDE

