

The image features a modern interior space with a series of arched openings and recessed ceiling lighting. The ceiling is illuminated with a warm, golden light, creating a dramatic atmosphere. The foreground shows a round white table with two modern chairs. The background shows a long hallway with similar arches and recessed lighting, leading to a screen displaying a cityscape. The overall aesthetic is clean, minimalist, and high-tech.

**APOGEE**  
LIGHTING

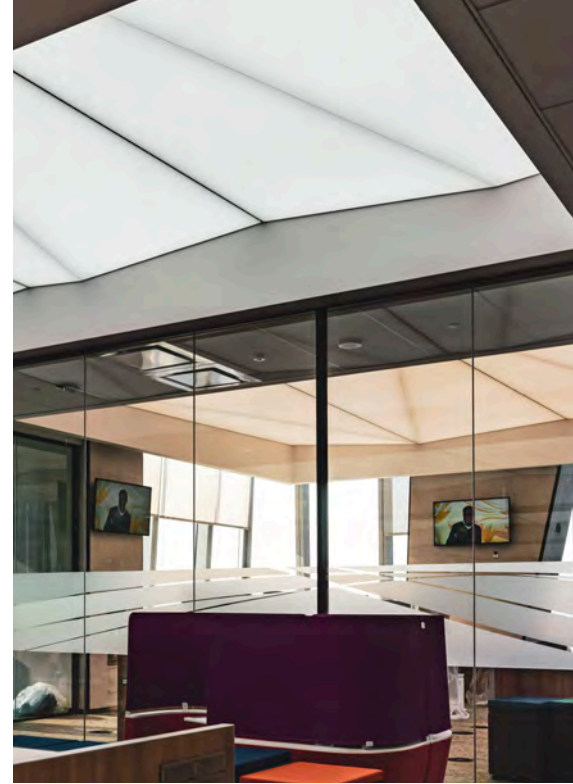
Apogee Illuminated Ceilings...

Putting Your Ceiling and  
Your Environment in it's Best Light.

# APOGEE ILLUMINATED CEILINGS

## AS BEAUTIFUL AS THEY ARE FUNCTIONAL.

Apogee Illuminated Ceilings provide clean, bright, flexible, consistent and glare free illumination to any environment no matter how large or complex the architecture.



### COMPRISED OF THREE MAJOR COMPONENTS:

- **Pixel** which is the LED engine behind every Apogee Ceiling and offered in both an acoustic dampening and non-acoustic dampening configuration.
- **NewMat®**, the scrim diffusion system that both mitigates dust collection and gently diffuses the Pixel LED light elements into a soft, yet powerful consistent light source
- **Lightscape®**, Apogee's signature fixture technology that can be custom designed into most any configuration regardless of environment, size or shape.



To see how Pixel, NewMat and Lightscape work together and install, scan the QRcode on your mobile device or computer.



**Outer Housing**

**LED Panel**

(Acoustic Dampening Option)

**Translucent Dust Layer**

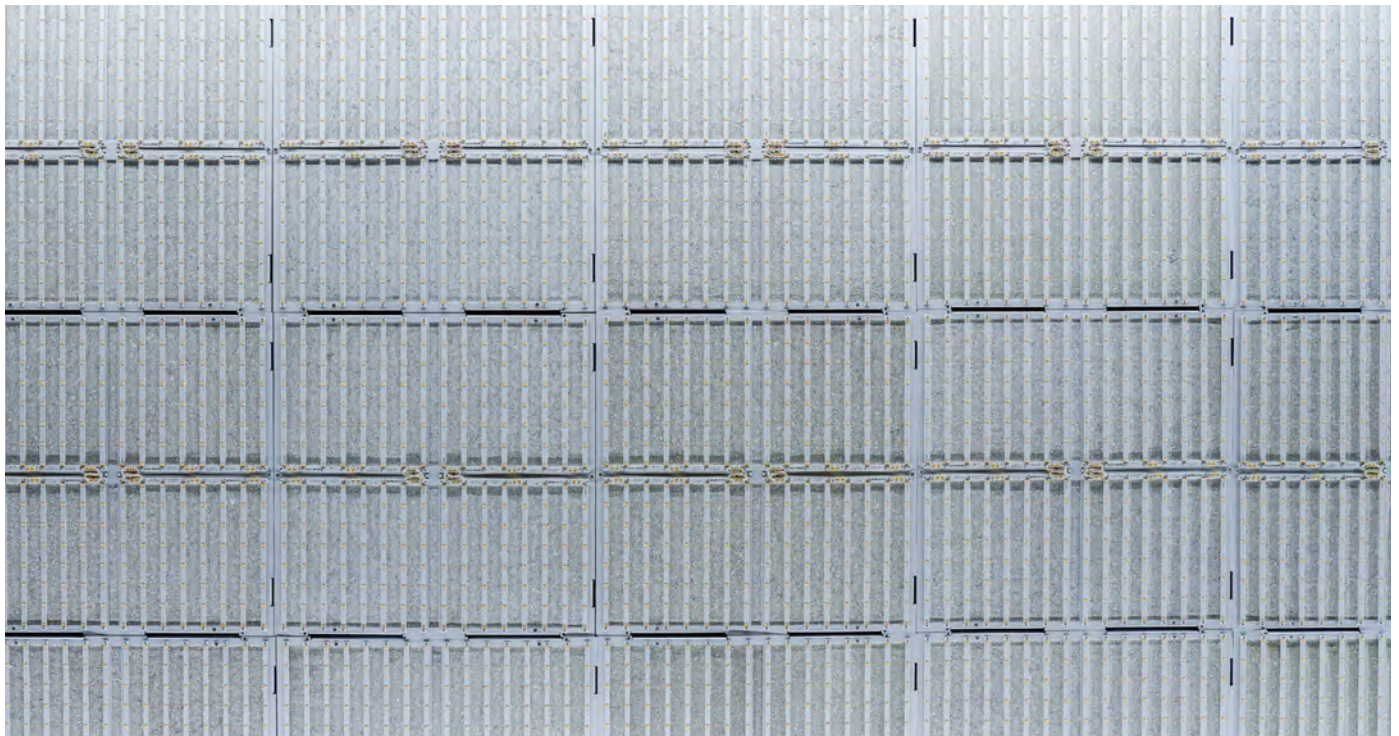
**Diffusion Layer**

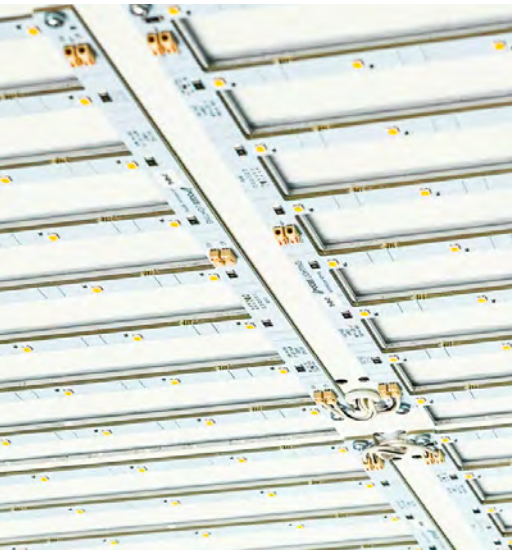


# PIXEL- LUMINOUS CEILING WITH OPTIONAL INTEGRATED ACOUSTIC DAMPENING

Pixel LED Ceiling Panels are the engine behind all of Apogee's Illuminated Ceilings, providing extraordinary luminous ceilings, available with an optional integral acoustic dampening system that reduces noise by 95%.

Our patented Pixel system is an ideal solution that combines acoustic dampening and LED lighting, maintaining a high degree of uniform light distribution. Pixel is custom tailored for backlighting architectural stretch ceilings and optimized to provide 100% diffused light when installed behind stretched membrane diffuser ceilings. The ceilings can be custom manufactured and configured to meet any required installation area, including low plenum, complex shapes, and wet locations, and are designed for easy maintenance and installation. Installation of Pixel is a breeze whether T-mount or any other surface mount and the integrated Apogee Dynamic White Solution offers a smooth color transition from 6500K down to 2700K and smooth dimming down to 1%.





## MAIN FEATURES:



Dim  
To Dark



10 Year LED  
Warranty



Static White,  
Dynamic White,  
RGB+W



Flicker  
Free



Custom  
Transitions



Acoustic  
Dampening



Patented Ceiling  
Grid Mounting  
System



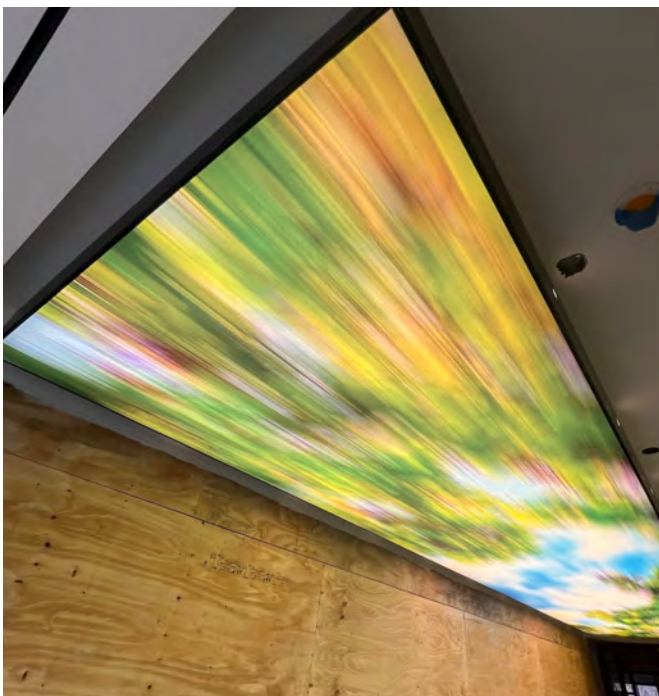
# THE NEWMAT® LAYER SYSTEM

## PROTECTS, DIFFUSES AND DAMPENS SOUND.

The NewMat® track system allows for both dust protection and diffusion layers when installed between the Pixel system and any of our Lightscape® solutions.

We wanted to source a premier partner with product technology that would integrate perfectly with our best-of-breed illuminated ceiling solutions and NewMat® was the only choice. Since 1986, NewMat® Stretch Ceiling Systems have provided the architectural, design, acoustical and lighting communities with the most creative and technically advanced ceiling solutions on the market.

NewMat®'s proprietary dust layer system prevents any material that may enter the space above from showing through the diffusion layer below. Additionally with an acoustic installation, the diffusion layer has thousands of microperforations to enhance the sound absorption, saving significant costs by eliminating the need for other acoustic material.



Deloitte Morristown Final Printed Membrane



Deloitte Morristown LED Close-Up



Deloitte Morristown Dust Layer



# LIGHTSCAPE® CLEAN. BRIGHT. UNIFORM. GLARE FREE.

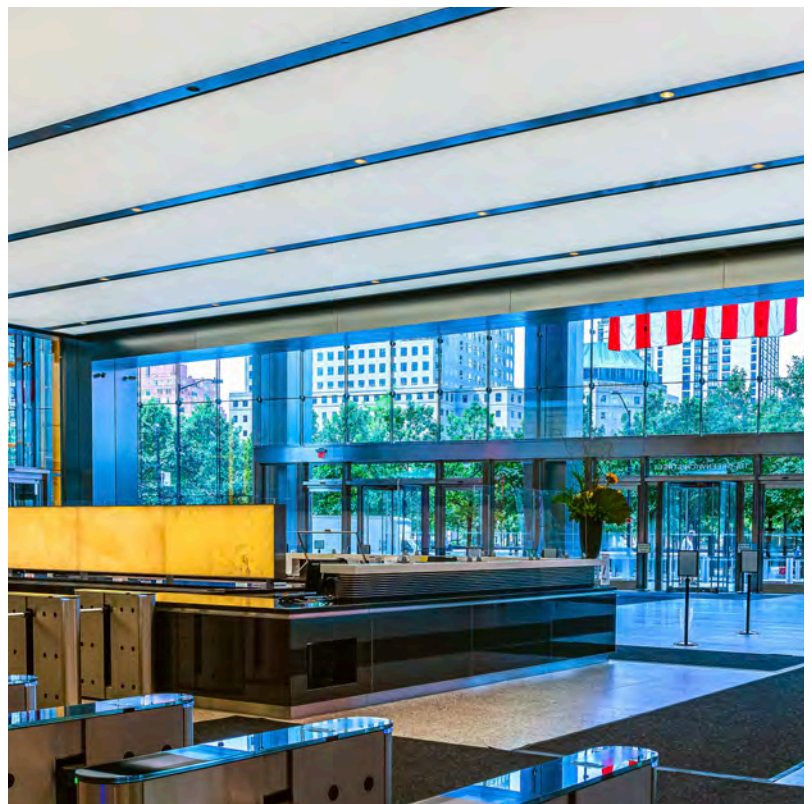
Lightscape® is a spectacular unobtrusive lighting solution that extends all the benefits of high efficiency LED lighting to large format and customizable shapes. Its seamless diffusers feature uniform lighting without lens deflection. It offers brilliant illumination edge to edge with optional acoustic dampening that can be easily serviced.

Layered with the Pixel LED engine and acoustic dampening system on top and the NewMat® stretch scrim dust inhibitor and light diffuser in-between, Lightscape® completes what is unquestionably the most complete illuminated ceiling system available today.

## Lightscape® Field Stretch

If the ceiling design and thus the fixture needed is larger than 6' x 9' which can be common with illuminated ceilings—it is impossible for the layers to be stretched and installed anywhere except the field.

This is where Lightscape® Field Stretch really lives up to its name. Engineered for the largest continuous spaces possible, Lightscape® Field Stretch is the ideal solution for the most demanding and innovative lighting designs... shining brightly to put any environment in its best light.



### MAIN FEATURES:



Dim  
To Dark



UGR>15



Static White,  
Dynamic White,  
RGB+W



Flicker  
Free



Human Centric  
Tunable Fixtures



Acoustic  
Dampening



Patented Ceiling  
Grid Mounting  
System



## Lightscape® Linear

If the need is an unlimited length of light with no seams showing, Lightscape® Linear is your answer.

Lightscape® Linear replaces conventional fixtures in long run installations. With zero seams there is 100% uniformity of light and absolutely no light leak at lens breaks. Remarkably, designers can now have limitless creativity because Lightscape® Linear allows lateral and vertical change of direction without a seam or a mitered corner.

### MAIN FEATURES:



Dim To Dark



Flicker Free



Glare Free



Static White, Dynamic White, RGB+W



Human Centric Tunable Fixtures



Warm Dimming



Custom Transitions



Patented Acoustic Dampening



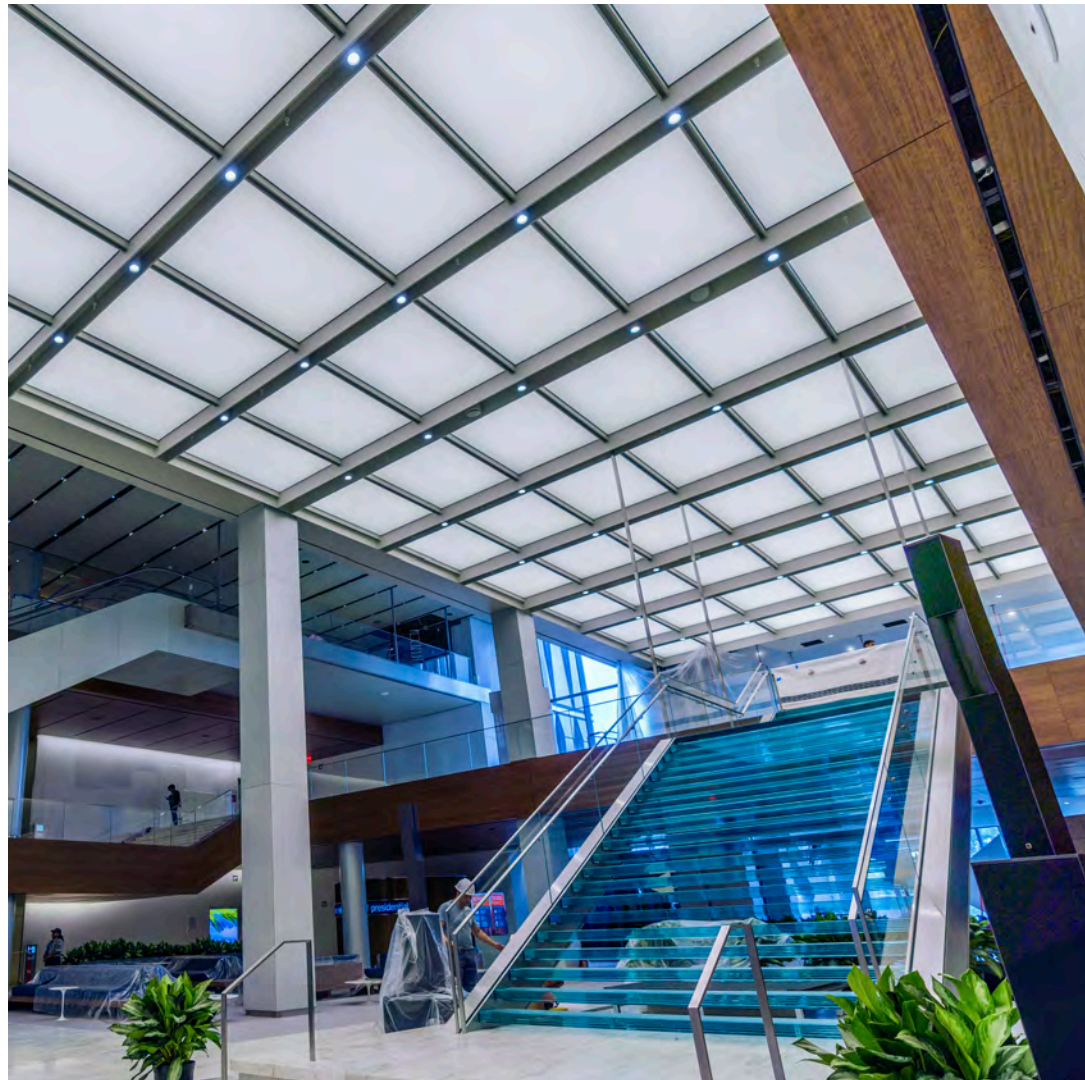
Per Inch





## Lightscape®

For the ultimate in convenience and control Lightscape® allows for any size or shape up to a 6' x 9' to leave the Apogee factory fully stretched and configured. It's the most plug and play solution you can have for a sophisticated ceiling illuminated solution. Plus Lightscape® can be field removable for cleaning and maintenance and with any issues related to the LED Driver, the removal/replacement is about as simple as it gets and can take place in the field.



### MAIN FEATURES:



Dim To Dark



UGR > 15



High Efficiency



Flicker Free



Human Centric Tunable Fixtures



Acoustic Dampening



Patented Ceiling Grid Mounting System





Apogee Lighting  
LONG ISLAND, NEW YORK HEADQUARTERS  
593 Acorn Street  
Deer Park, NY 11729

Phone: 631.254.6975  
[www.apogeelighting.com](http://www.apogeelighting.com)